

Scales & Arpeggios from Memory

For the examination, the candidate should be asked to perform the eight starred (**) scales and arpeggios below plus any other two items from memory. They should perform each scale and arpeggio either tongued or slurred as requested by the teacher. The teacher should aim for an even distribution of articulations. All tempi given are minimum speeds.

♩=96

** C major scale - 2 octaves



F# major scale - 1 octave (dominant to tonic resolve)



Bb major scale - 1 octave (dominant to tonic resolve)



** D harmonic minor scale - 12th



** G# melodic minor scale - 1 octave (dominant to tonic resolve)



A harmonic minor scale - 1 octave (dominant to tonic resolve)



** Whole tone scale on C - 2 octaves



♩=84

** Diminished 7th on C - 2 octaves



Dominant 7th in A - 1 octave



** Dominant 7th in E - 1 octave



♩=56

** C major arpeggio - 2 octaves



F# major arpeggio



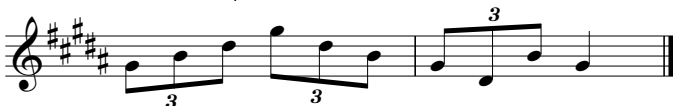
Bb major arpeggio



D minor arpeggio - 12th



** G# minor arpeggio



A minor arpeggio

